

# Lamplighter



"But if we walk in the light, as He is in the light, we have fellowship with one another, and the blood of Jesus His Son cleanses us from all sin." 1 John 1.7 ESV

PEACE LUTHERAN CHURCH – HASTINGS, NE

OCTOBER 2018

### IN THIS ISSUE

1. Rural & Small Town Mission
2. Open the Doors II Clergy Month Steak Night
3. L.W.M.L. gift bucket, Birthday Party, minutes
4. Prayers, Facts & Stats
5. Oct. 6th Update, Fund, Donations, Ladies Night
6. Block Party & Pictures, Honey Sunday & Facts
7. Voters, Youth,
8. Calendar Dates

### Office Hours:

Monday-Friday

9:00a-12:00p

1:00p-4:00p

(402) 462-9023

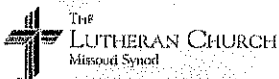
### Office Secretary:

Mrs. Jeri Dush

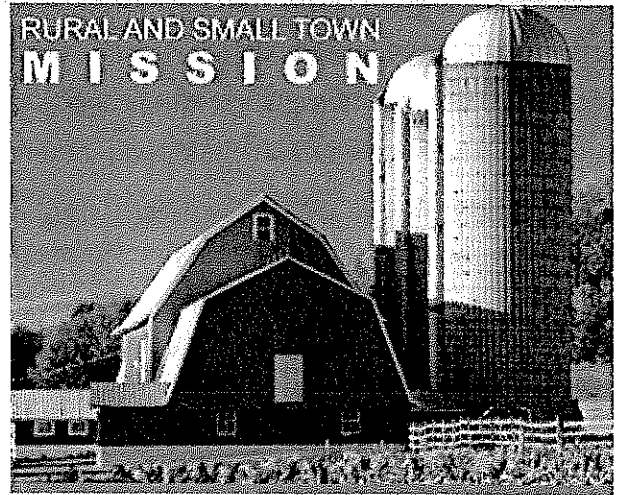
### Pastor:

Rev. Marcus J.

Mackay



*On October 6th, we will be blessed to host Rev. Todd Kollbaum, director of LCMS Rural and Small Town Mission. If you haven't signed up to attend this event, do so now! The following is a blog from Rev. Kollbaum that is helpful in remembering the importance of "loving our neighbor." - Pr. Mackay*



+++++

This past week I had the great blessing of spending a few days in Tennessee at the Mid-South District Pastor's Conference. On the drive down, once I made it to southern Missouri, I encountered something I had actually never seen in person...ripe cotton fields. While I grew up on and around farms and have been there all my life, northern Iowa isn't exactly cotton country. It was so interesting to see those dark plants bursting forth with snow white cotton. Of course, immediately I thought of John 4, "Do you not say, ***There are yet four months, then comes the harvest? Look, I tell you, lift up your eyes, and see that the fields are white for harvest.***"

Of course, Jesus wasn't talking about a particularly good cotton harvest, or wheat or beans or corn but a harvest of new believers. So often we who dwell along the byways of our land forget that there are rich fields around us everywhere, just waiting to be worked. Just waiting to hear the Good News of Jesus Christ, waiting for the ***"fruit for eternal life"*** to be gathered while others continue to sow so that the "sower and reaper may rejoice together".

To that end, I wanted to share with you a quote from C.F.W. Walther which I often share with groups:

*"It is a primary duty of a confessionally faithful synod that it take an enthusiastic part in all God-pleasing organizations dedicated to the spread of Christ's kingdom in the world. That is the duty of every synod, including our own. It is to join the ranks of that great army of laborers in the harvest field of Christ. For the harvest has long been 'dead ripe'...In short, a synod is to be a living member of the body of Christ, and together with every other living member of that most sacred body in the whole world, it must do whatever it possibly can to spread Christ's kingdom and wherever possible, to win for Christ and to lead into His sheep-fold all those whom Christ has bought with His precious blood, and ultimately to lead them in the salvation of everlasting life." (C.F.W. Walther, "Duties of an Evangelical Lutheran Synod.")*

Let us with great boldness, no matter where the Lord of the Church has placed us, join that great army to labor for the harvest! I pray the Lord of the Harvest blesses you with the sight to "see" the fields around you, the strength and wisdom to share His love and the joy that comes from serving Him.

**For more information on rural and small town mission or for resources, please visit our web page [www.lcms.org/rstm](http://www.lcms.org/rstm)**

Todd Kollbaum

*As director of LCMS Rural & Small Town Mission, the Rev. Todd E. Kollbaum oversees the development of resources, leadership training and ministerial-support programs to equip congregations in rural areas and small towns for local and regional outreach and engagement.*



Our new facilities are such a blessing to our congregation! Thanks to all who have supported and donated thus far.

**OUR DOORS ARE OPEN!**

Will you help us pay-off our new addition?

Remaining Debt \$ 196,892.00  
(designate on check/envelope) to

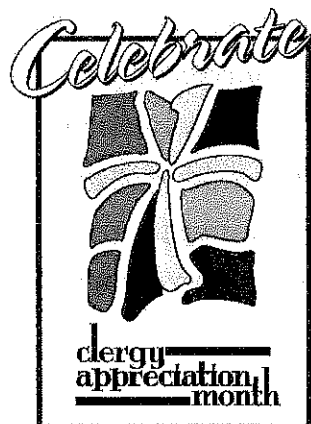
**"Open the Doors II"**

Peace Lutheran Church  
906 N. California  
Hastings, NE 68901

## OCTOBER GIFT BUCKET

By Elders

Pastor Mackay & Family



## Men's Steak Night Monday, October 8th

All men are invited to enjoy steak & fellowship! at 6:00pm (eat around 6:30pm) \$12 p/ person. We play cards & enjoy beverage after a short Bible Study. Join Us!





### OCTOBER 2018 LWML

**October 8th** -- Sewing for Orphan Grain Train at 9:30 a.m.

**October 14th** -- LWML Sunday

**October 15th** LWML Quarterly Meeting at 7 p.m. We will hear of missions that have been and will be funded and CELEBRATE our birthdays with a treat. In place of gifts for each other please bring a cake mix/frosting for a gift to a Middle Schooler to celebrate. Also, we are collecting Gift Cards or cash for our Seminaries. The bus is scheduled, let the office know the week ahead if you plan to attend. Thanks **Diane Gundlach**, President

### *July Quarterly Meeting of L.W.M.L.*

The Quarterly meeting of the Peace Lutheran Women's Missionary League met on July 16th at 6:30pm for a Salad Supper. Our Hostesses were Janelle Ham, Bev Saathoff, and Ronda Johnson. Mary Ann Niemoth spoke about her mission trip to Africa. Mary Ann had pictures of the school where she taught and stories of a great acceptance of the Bible and teachings. The Regular meeting was called to order. Sue Fintel gave a Mite Box talk and dedication. Nadeen Debban reported that 24 Layettes were assembled for Orphan Grain Train and sent with the extra items collected and some quilts. We are now collecting school supplies. Carol Hansel reported the funds available from the sale of cards. An extra \$42.23 was sent to the mite collection from the church donations. Also Memorial Funds were recently sent also. Voting delegates for the convention 9/14-15, were Diane Gundlach and Janelle Ham. Carol Hansel along with Ruth Albers will make Christmas Decorations for the upcoming Christmas Dinner. 9/30 Hastings Zone Fall Rally at Zion Lutheran, Hastings hope Ladies attend. Meeting was adjourned with the Lord's Prayer.

**Benevolence (Good Samaritan) Fund** As a church we would like to help families during their time of need, so Peace Lutheran Church would like to start a new support fund for those families that are facing hardships and need help. We want to use this fund to help our church families, but we want to also serve others in the community as long as it meets the criteria of the policy setup for this fund and is approved by the Human Care Committee, who will be overseeing this fund. There is a locked offering box in the Narthex on a permanent basis to collect donations from those who would like to help these families financially, or you may use your offering envelope and mark "benevolence fund" in the other section at the bottom. The monies will be used to pay for things such as medical bills, gas for vehicles, utility bills, etc. This will be an ongoing fund so prayerfully consider making a donation from time to time to help your brothers and sisters in their time of need.

7 "If among you, one of your brothers should become poor, in any of your towns within your land that the Lord your God is giving you, you shall not harden your heart or shut your hand against your poor brother, 8 but you shall open your hand to him and lend him sufficient for his need, whatever it may be. 11 For there will never cease to be poor in the land. Therefore, I command you, 'You shall open wide your hand to your brother, to the needy and to the poor, in your land.' Deuteronomy 15:7-8, 11 **PLC Board of Elders**

L.W.M.L.  
Ingathering  
School Kit  
Drive!  
85-notebooks  
39-blunt  
scissors  
38-rulers  
68-glue sticks  
370-pencils  
86- 2" eraser  
48-box crayons  
542-sheets construction paper  
91- pens  
10- colored  
markers  
41- pencil  
sharpener  
41- protractors  
51- cloth bags  
"Thank You"  
For your  
Generous  
Support!!  
Human Care  
Chair, Nadeen  
Debban



**BUCKET: GIFT CARDS  
FOR SEMINARY  
STUDENTS AT  
CHRISTMAS**

**Mourning** + Family of Harlan Wherley + Family of LeRoy Thom **Expecting** + Sara Armon + Erica Siebert + Kayla Reutzell + Jessica (Jay Jay) Morgan **Divine Call** + Pastor Mackay & family **Hospice, Surgery, or Hospitalization** + Jean Thom + Tammy Rodriguez + Ramona Holtzen + Deb Johnson + Al Kress **Health Issues** + Carol Smith + Randy Russell **Cancer** + Barbara Classan + Andy Jacques + Ed Elshof + Marilyn Houston **Military** + Gary Thompson + Ross Peters



### August Financial Summary Reports 2018

General Fund	\$ 42,335	Property Improvement Fund	\$ 4,479
Memorial Fund	\$ 21,599	Church Savings	\$ 505
Junior Youth Ministry	\$ 3,833	Senior Youth Ministry	\$ -192

YTD Weekly Average Church Attendance		150	
CURRENT OFFERINGS	\$ 100,866	PROPERTY OFFERINGS	\$ 1,846
At 57% BUDGETED	\$ 118,973	At 53% BUDGETED	\$ 2,333
SPECIAL OFFERINGS	\$ 732		
At 56% BUDGETED	\$ 867		

**FINANCIAL NOTES:** The total budget income is sitting at 56% overall and total expenses 72%.  
Last year we stood at 56% for Income and 70% for expenses.

### **Open the Doors of Peace – August 31, 2018**

(totals include all monies that have been received from 2013 to present)

**Income:**

Capital Campaign I-Pledged Donations	\$ 799,806
Capital Campaign I-Non-Pledged Donations	\$ 31,976
Capital Campaign II	\$ 182,614
Alan Koepke Pledge	\$ 43,788
Interest	\$ 3,903
Special Paint Supply Donation	\$ 1,000
<b>Total Income:</b>	<b>\$ 1,063,087</b>
Total Expenses to date (increases with loan interest)	\$ 1,264,490
Current Building Loan Balance (does not include interest)	\$ 192,260

Respectfully Submitted,

**Jan Hinze**

Treasurer

Mr. Dave Witt  
Dr. Phil

6:00pm Choir  
Join Us!

Want to en-  
courage and  
Welcome

Youth to play  
instruments,  
solos, small  
groups at our

Services  
please talk  
with

Mr. David  
Witt



WINE  
DONATIONS

For the  
up-coming  
Months.

Members may  
Bring to the  
CHURCH  
OFFICE.

THANK YOU!

ALTAR GUILD

**Benevolence (Good Samaritan) Fund** As a church we would like to help families during their time of need, so Peace Lutheran Church would like to start a new support fund for those families that are facing hardships and need help. We want to use this fund to help our church families, but we want to also serve others in the community as long as it meets the criteria of the policy setup for this fund and is approved by the Human Care Committee, who will be overseeing this fund. There will be a locked offering box in the Narthex on a permanent basis to collect donations from those who would like to help these families financially, or you may use your offering envelope and mark "benevolence fund" in the other section at the bottom. The monies will be used to pay for things such as medical bills, gas for vehicles, utility bills, etc. This will be an ongoing fund so prayerfully consider making a donation from time to time to help your brothers and sisters in their time of need.

7 "If among you, one of your brothers should become poor, in any of your towns within your land that the Lord your God is giving you, you shall not harden your heart or shut your hand against your poor brother, 8 but you shall open your hand to him and lend him sufficient for his need, whatever it may be. 11 For there will never cease to be poor in the land. Therefore, I command you, 'You shall open wide your hand to your brother, to the needy and to the poor, in your land.' Deuteronomy 15:7-8, 11

**PLC Board of Elders**

### ENGAGING YOUR COMMUNITY Workshop

coming to Peace in October *Let's go...to the small towns.* Mark 1:38

Through a grant from LCEF (Lutheran Church Extension Fund) and in partnership with the Nebraska District Office, Peace Lutheran Church-Hastings, will host a workshop called "Engaging Your Community" on Saturday, October 6, 2018, 8 a.m. to 3 p.m. This workshop will be advertised across the state, but especially to our circuit and neighboring circuits. The PR Committee is asking for donations of coffee cakes and rolls, cookies to serve that day, Volunteers please check for sign-up sheet, Narthex. Registration fee is \$25 per person OR \$100 per congregation. You will need to pre-register by giving our Church Office your name, address, email address, and phone number. All walk-ins are charged \$25 per person at the door whether you are from the host congregation or another. Bottom line: please pre-register if you would like to attend or help serve the refreshments and meal. The noon meal (paid for by LCEF funds) and refreshments provided. **8:00am Registration 8:30am-3:00pm Workshop, Lunch and Snacks are provided-no cost Thanks, Joan Primrose**

Ladies'  
Night

All Ladies' please join us on Thursday, Oct. 18th at 6:30 p.m. We will enjoy treats and continue to work on Chrismons for Christmas Decorations. Please join us! **Lisa Novak**

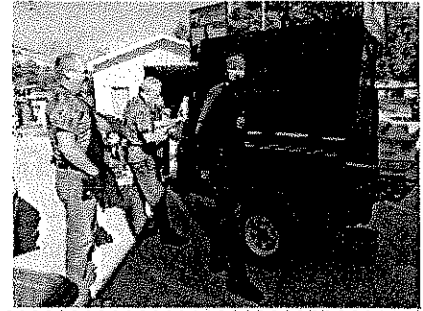


**HONEY SUNDAY'S IN NOVEMBER 2018**

Honey bears will be for sale at \$5 each beginning Sunday, November 5th and until all 18 bears are sold. The honey bears can be found in the Narthex after the early service and before the late service, or in the office during the week. If you do not use honey, a donation is always appreciated and put to good use.

The funds raised from honey bear sales goes to the Adams/Clay ARC advocates for the rights of all citizens with developmental disabilities and provides support for their families and are used for social events, resources, as well as advocacy for these individuals and their families. Thank you so much for your kind support. Contact person: **Joan Primrose** 402-463-9752.

**DID YOU KNOW** honey NEVER spoils? It is one of God's perfect foods. If your honey has crystallized, you can make it smooth and golden once again. Simply heat a pan of water with low heat. Remove the pan from the stove and place your honey jar inside. Be sure to take the lid off your jar before placing it in the warm water. Microwaving overheats the honey and doesn't heat evenly, so that's not recommended unless you are in a hurry. Honey will crystallize in the hive if the temperature goes below 50°F (10°C), and honey will crystallize in your containers if you have a cold cupboard cabinet. Finding a warmer spot to store your honey will slow crystallization.



**Neighborhood Block Party was a Success!**

Over one hundred people came out to enjoy a beautiful Sunday evening in the church parking lot. Many people from our congregation and a few neighbors who live nearby attended. We were entertained by Hispanic dancers dressed in their colorful costumes. Our own Bertha Alverdez was a dancer. Pastor even joined them during the Chicken Dance! The kids enjoyed the bounce house.

We appreciate the men from Celebrate Recovery for grilling the hamburgers and hotdogs, the ladies that brought salads and desserts to share, and all the people who came early to help set up and clean-up. The soft serve ice cream machine was a hit. We could tell because people tried to squeeze more of the tasty treat out of the empty machine.

We give thanks to Thrivent Financial for the Action Team seed money we received to fund this event. We thank Glen and Kay Krueger and Barbie Hoins for "living generously" and applying for this seed money through their Thrivent membership. If you own an investment or insurance policy with Thrivent, you also have two opportunities per year to apply for seed money. If you haven't been tapping into yours, let us know, we might have other projects or events that could use some financial assistance.

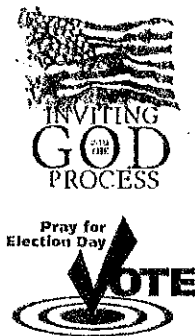
Funding for Thrivent's outreach comes from their tax exemption as a not-for-profit fraternal benefit society. Money Thrivent would otherwise pay in certain taxes instead goes to strengthen the communities, congregations and causes their members care about. Members are actively involved in deciding where the money goes locally.

**Joan Primrose**



**THRIVENT FINANCIAL**

*Connecting faith & finances for good.™*



**PARENTS!** *"Train up a child in the way he should go; even when he is old he will not depart from it."* Proverbs 22:6

We have made a dedicated effort to provide classes and activities for our Youth and Children here at Peace! But you need to bring them! Sunday School every Sunday from 9:30-10:15am and Family Night Classes & Catechism from 6:00-6:55pm. See you then!

**Board of Education**

For those who are not already registered to vote, the last day to register in person at the Adams County Clerks office is Friday, October 26 by 6 p.m. Mail-in registrations must be postmarked by October 23. Mail-in registration forms can be downloaded from the Nebraska Secretary of State webpage. Early voting must be done in person in the County Clerks office beginning October 9 and ending on November 5. Christian's are called to be involved in our government by praying and voting. Our religious freedoms, protection of life, the future of our country for our children and grandchildren to be able to live in the "land of the brave and the free" is at stake. Do your duty....VOTE! If you need a ride to register and/or vote, either early or on November 6, please call the church office. Arrangements will be made. **Joan Primrose**

### ***Youth Service Project & Church Members***

"Starting Sunday, September 30th and going to December 16th, the Sunday School & Wednesday Family Night students of Peace Lutheran Church will be collecting dry goods, canned food and non-perishable items to be distributed to people and families in our congregation and our community in need. Donations are welcome to help the families in need through the holidays. The Sunday School & Wednesday Night Classes will work with the Human Care Committee to distribute the food and items to the ones in need. Questions please contact **Carol Krause**."

**Heartland Lutheran High School** will be holding a Craft Fair on October 7, 2018 from 11:00 - 3:00 pm. We will be in need of crafts, quilts, and other homemade items, cookies and goodies. All proceeds go toward tuition assistance. If you have things to donate or we would again ask that each association church provide a roaster of soup to Heartland Lutheran to sell at our lunch, please contact the school office at 308-385-3900. **Grandparents Day** at HLHS Grandparents Day has been rescheduled for Wednesday, November 7. All grandparents are invited to attend. Please email or call the school office with grandparent information: Name (s), Address, Phone Number, Email Address and the name of the attending HLHS student. If a grandparent would like to attend, but does not have a student at HLHS, we will happily pair you with an "adopted grandchild".

Join us in the annual **Life Chain in Hastings on Sunday, October 7**. We stand in silence, for life, from 2-3 pm, on the east side of Burlington Avenue. Park in the museum parking lot and find a spot along Burlington to be a witness for life. Spend the hour in prayer as you witness for life.

Barbecue for Wellspring Pregnancy and Health Care Center in Hastings, on Sunday, October 7 from 11 to 1:30p at Adams County Fairgrounds (old activities building). Freewill donation for a pulled pork sandwich and the fixin's. Enjoy lunch and make a donation for pro-life!  
**Ruth Nicolaus**

## **PEACE LUTHERAN HIGH SCHOOL YOUTH**

*Senior Youth Group is going strong we have a great group of youth attending, 13 Students Strong! Hope to have more of our High School youth attend YOUTH GROUP Wednesday Nights at 7:30pm.* **Brenda Christensen**



# Peace Lutheran Church

The Lutheran Church—Missouri Synod

[www.peacelutheranhastings.org](http://www.peacelutheranhastings.org)

906 N. California Ave.  
Hastings, NE 68901-4079

**ADDRESS SERVICE REQUESTED**

NON-PROFIT ORGANIZATION

US POSTAGE

PAID

PERMIT NO. 329

HASTINGS, NE 68901

OCTOBER

## ***PLEASE USE THE NEW ENTRANCE TO ENTER & EXIT SERVICES & EVENTS!***

### **NOTEWORTHY DATES**

- |         |         |                                      |                                  |
|---------|---------|--------------------------------------|----------------------------------|
| Oct. 6  | 8:00a   | Registration - Engage Your Community | 8:30a Workshop page 5            |
| Oct. 8  | 9:30a   | Sewing for Orphan Grain Train        |                                  |
|         | 6:00p   | Men's Steak Night                    |                                  |
| Oct. 9  | 6:00p   | Finance Board                        | 7:00p Trustees & Elders Meetings |
| Oct. 10 | 11:00a  | Senior Bible Study                   | 11:30a Lunch Village Diner       |
| Oct. 15 | 7:00p   | L.W.M.L. Quarterly & Birthday Party  |                                  |
|         |         | Right to Life Board                  |                                  |
| Oct. 17 | 5-5:30p | Pink & Blue Flag Display Set-up      | All Volunteers                   |
| Oct. 18 | 6:30p   | Ladies Night                         |                                  |
| Oct. 24 | 2:00p   | Calling & Caring                     |                                  |
| Oct. 28 | 4:00p   | Circuit Reformation Service          | Zion-Wanda                       |

### **WEEKLY SCHEDULE**

- |           |   |
|-----------|---|
| Sunday    | <i>Divine Service 8:00a &amp; 10:30a Bible Class 9:30a-10:15a</i>   |
| Tuesday   | <i>Bible Study 9:30a-10:30a Exception No Class Tuesday, Oct. 23</i>   |
| Wednesday | <i>Midweek Family Night- 5:30p Meal 6:00p Classes &amp; Choir 7:00p Worship<br/>7:30p High School Youth</i> |





# Peace Lutheran Church

(402) 462-9023  
 906 N. California Ave.  
 Hastings, NE 68901

www.peacelutheranhastings.org

## OCTOBER 2018

Sunday	Monday	Tuesday	Wednesday	Thursday	Friday	Saturday
	1	2	3 5:30p Meal 6:00p Classes, Choir 7:00p Worship 7:30p Sr. Youth	4	5	6 9am-3pm "Engaging Your Community" at Peace
Nineteenth Sunday a Trinity 7 8:00a Divine Service 9:30a Sunday School & Bible Class 10:30a Divine Service	8 9:30a Sewing OGT 4:00p LWML Exc. Bd.  6:00p Men's Steak Night	9 9:30a Bible Study 6:00p Finance Board 7:00p Trustees & Elders Meeting	10 11a Senior Bible/Lunch 5:30p Meal 6:00p Classes, Choir 7:00p Worship 7:30p Sr. Youth	11	12	13
Twentieth Sunday a Trinity 14 8:00a Divine Service 9:30a Sunday School & Bible Class 10:30a Divine Service-L.W.M.L. Sunday 2:00p College View	15 7:00p LWML Qtr. & Birthday Party 7:00p Right to Life Board	16 9:30a Bible Study	17 5pm Volunteers Set-up Pink & Blue Flags 5:30p Meal 6:00p Classes, Choir 7:00p Worship 7:30p Sr. Youth	18 6:30p Ladies Night	19	20
Twenty-First Sunday a Trinity 21 8:00a Divine Service 9:30a Sunday School & Bible Class 10:30a Divine Service 2:00p College View	22	23	24 2:00p Calling & Caring 5pm Volunteers take down Flag Display 5:30p Meal 6:00p Classes, Choir 7:00p Worship 7:30p Sr. Youth	25	26	27
Reformation Day (Observed) 28 8:00a Divine Service 9:30a Sunday School & Bible Class 10:30a Divine Service 2:00p College View 4:00p Circuit Reformation Service Zion-Wanda	29	30 9:30a Bible Study	31 5:30p Meal 6:00p Classes, Choir 7:00p Worship 7:30p Sr. Youth	Altar Guild: Shannon Blakley, Jeanne Buck Elders: 7-Wes 14-Ernesto 21-Roger 28-Dale G. Ushers: 8:00a Dale Bauman, Craig Weseman 10:30a Shannon, Collin & Hunter Fowler		

### **OCTOBER BIRTHDAYS**

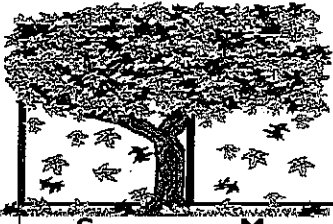
- 1- Betty Krueger
- 2- Mary Fredricks
- 3- Kellie Boutin
- 4- Mary Davis, Mike Gundlach
- 5- Peggy Saddler, Larry E. Hammond
- 6- Kathy Lundquist
- 7- Ruth Ohlsen
- 8- Susan Hartman, Alex Meier
- 12- Ronda Rosenau, Randy Scott  
Brandt Ruppert
- 13- Jim Jacobs, Ruth Larson
- 14- Jerry Blazer, Merrick Russell
- 16- Diana Dieken, Lillian Shuler
- 17- Alex Klatt, Jena Mackay
- 19- Liza Grotelueschen
- 22- Don Nissen
- 23- Willard Garlock, Dianna Uhrich, David Witt
- 24- Viola Melvin
- 25- Beau Zimmerman
- 26- Serenity Johnson
- 27- Jaxton Nissen, Jean Thom
- 28- Donna Fowler, Izzy Uecker, Josh Russell
- 30- Bradyn Boutin

### **OCTOBER BAPTISMAL ANNIVERSARIES**

- 2- Jared Blackwell, Jeri Dush
- 5- Allie Theesen
- 8- Vicci Willmon
- 9- Derek Zeisler
- 10- Enoch Dixon, Rachel Witt
- 11- Sebastian Stack
- 12- Melissa Hart
- 13- Kathy Lundquist, Willard Garlock
- 14- Erik Meier, Carol Krause
- 15- Mary Davis, Ray Fredricks
- 19- Hunter Fowler
- 22- Larry E. Hammond
- 24- Jaden Lacy
- 25- Mary Keogh, Scott Keogh
- 27- Ruth Ohlsen, Lydia Wolfe
- 29- Freida Nelson

### **OCTOBER ANNIVERSARIES**

- 4- Ron & Susan Fullerton
- 15- Dustin & Jackie Russell
- 16- Ron & Annette Steiner
- 18- Shannon & Donna Fowler
- 29- Clancy & Jeri Dush



October 2018  
**Wednesday Family Night Menu**

**Peace Lutheran Church**

Items to Stock the  
 Pantry:

\*\*Please have items at Church by  
 Tuesday Mornings.

**\*\*Needed EACH WEEK**

**Desserts!** (can bring Wed. Evenings)

10/03 Cream of Mushroom Soup  
 Tator Tots  
 Salad Mix

10/10: Chicken HindQuarters  
 Reemes Frzn Egg Noodles  
 Salad Mix

10/17: Box of Scalloped Potatoes  
 Salad Mix

10/24: Spaghetti  
 Spaghetti Sauce  
 Garlic Bread

10/31: Tator Tots

**Items needed to STOCK the  
 pantry for the year!**

\*Canned Fruit-Fruit Cocktail, peach-  
 es(sliced) Pears

\*Jello

**\*\*Needed EACH & EVERY  
 WEEK**

**Desserts!!!**

Sun	Mon	Tue	Wed	Thu	Fri	Sat
	1	2	3 Tator Tot Casserole Dinner Rolls Salad & Dessert	4	5	6
7	8	9	10 Chicken 'n Noodles Green Beans Salad & Dessert	11	12	13
14	15	16	17 Ham Scalloped Potatoes Corn Dinner Rolls Salad & Dessert	18	19	20
21	22	23	24 Baked Spaghetti Garlic Bread Green Beans Salad & Dessert	25	26	27
28 Reformation Sunday	29	30	31 Happy Halloween Spooktacular Meal Sloppy Joes Tator Tots Corn Salad & Dessert			

\*\*\*Menu is subject to change.

\*\*\*\*Questions call or Text Brenda Christensen 402-984-3866

# Family Night Schedule

2018-2019

Peace Lutheran Church

Wednesdays 5:30-7:30pm

5:30 Meal    6:00 Classes & Choir    7:00 Prayer Service

## September                      Lesson

12    **FIRST NIGHT! #1**  
19                      #2  
26                      #3

## October

3                      #4  
10                     #5  
17                     #6  
24                     #7  
31                     #8

## November

7                      #9  
14                     #10  
21    *NO FAMILY NIGHT*  
28                     #11

## December

5                      #12  
12                     #13  
19                     #14  
26    *NO FAMILY NIGHT*

## January                      Lesson

2                      *NO FAMILY NIGHT*  
9                      #15  
16                     #16  
23                     #17  
30                     #18

## February

6                      #19  
13                     #20  
20                     #21  
27                     #22

## March

6                      #23  
13                     #24  
20                     #25  
27                     #26

## April

3                      #27  
10    *Confirmation Examination 6:00pm*  
14    *Palm Sun CONFIRMATION 10:30am*  
17                     #28  
24                     #29

## May

1                      **LAST NIGHT! #30**

5/28-5/30      Confirmation Camp

---

Sunday Divine Services:                      **8:00am & 10:30am**  
Sunday School:                                      **9:30am – 10:15am**

**Important Dates:**    Confirmation Examination    *Wednesday, April 10<sup>th</sup> 6:00pm*  
Confirmation                      *Palm Sunday, April 14<sup>th</sup> 10:30am*  
Confirmation Camp                      *Tuesday, May 28<sup>th</sup> – Thursday, May 30<sup>th</sup>*